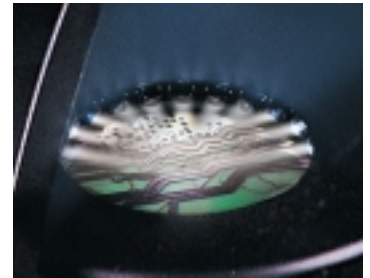


# LineGauge™ Top and bottom conductor line width measurement



## Key benefits

- Quickly discovers etching factors
- Easily measures top and bottom conductor line widths
- Easily checks the conductor line space and width on the board
- Reduces measuring time and increases measuring accuracy
- Easy to operate and requires little training



## Overview

Traditionally, well-trained inspectors spend a long time with a 50X or 100X magnifier to measure conductor line widths. They are forced to carefully count these tiny lines with the magnifier. The operators will have tired eyes after just a short inspection. Different inspectors can easily end up different results due to the rigors of examination.

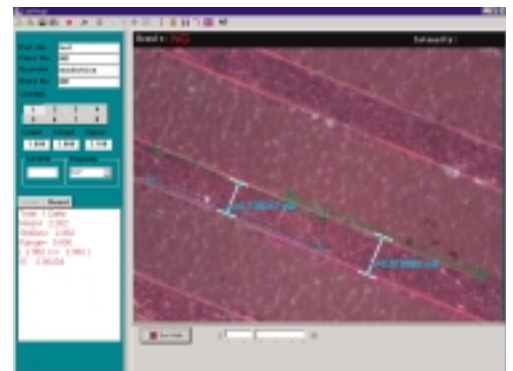
The LineGauge™ system remedies this situation by providing high quality optical measurements.

## Advantages

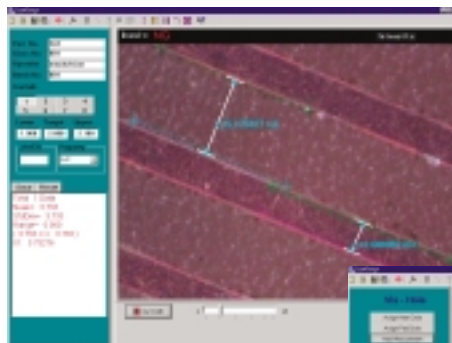
The LineGauge™ system is specially designed for desktop use in order to measure conductor line widths, conductor line spaces, arcs, circles and other patterns on the PCB board.

It can measure a conductor line width less than 1 mil. Besides hi-tech imaging, the LineGauge™ system is unbelievably light weighing only 0.73 kg and providing easy mobility.

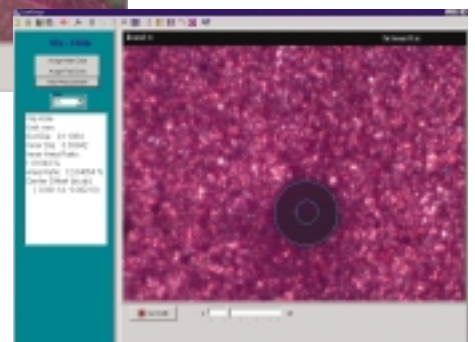
The unique and smooth design of the LineGauge™ base ensures that your PCB board will not be scratched during inspecting. Its special lighting design allows users to measure line widths without considering the angle of conductor lines. And the LineGauge™ system can provide measuring results in text format. Users can then simply import these results to Microsoft Excel™ to analyze the results in detail.



The LineGauge™ system measures the top and bottom conductor line widths at the same time, and shows the measuring results in the result window.



The LineGauge™ system measures the top conductor line width and the conduct line space at the same time. It also shows the NG result in red.



The LineGauge™ system can measure the Via-Hole on the board

<b>Structure</b>	<b>Granite gantry</b>
Dimensions	145 x 145 x 210 mm (L x W x H)
Weight (controller excluded)	0.73 kg
Camera	High resolution array CCD
Lighting	LED coaxial light and LED side light
Optical resolution	0.78 $\mu$ m
Controller	High performance PC
Measuring patterns	Line widths,Line space,Arcs, Circles,Via-Hole(optional)
Operating system	Windows™ family
Power	AC 110V/220V, 60Hz, 500W

The information is believed to be true and accurate based on our laboratory testing and experience. Specifications and design are subject to change without notice.

## **MACHVISION, INC.**

3F,No.15, Industry East Road IX, Science-Based Industrial Park,  
Hsinchu, 30077, Taiwan, R.O.C.

Tel: +886 35638599 Fax: +886 35638598

<http://www.machvision.com.tw>

e-mail:[sales@machvision.com.tw](mailto:sales@machvision.com.tw)