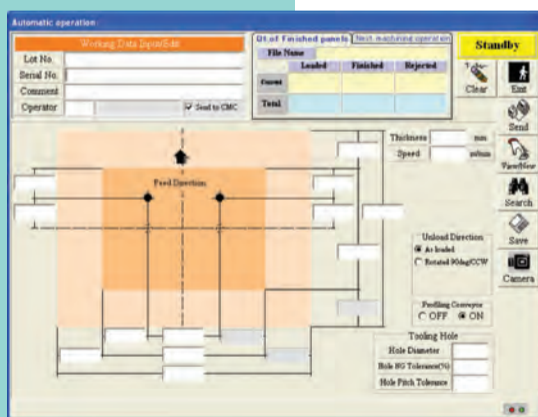


**CMC-700A**  
**MULTILAYER**  
**SHEAR/BEVELER**  
 多层板用剪磨边机



3

**COMPACT MULTILAYER SHEAR/BEVELER  
 WITH OPTICAL ALIGNMENT SYSTEM.**



●Examples of Operational Display

**FEATURES 特点**

- 240 panels/hour
- CCD camera
- Easy to link with X-ray drilling machine
- PC supplies mass cutting data storage
- Reliable Fanuc control system

**SPECIFICATIONS 规格**

PANEL SIZE (finish size) :  
 Max.700mm(27.56)X700mm(27.56)  
 Min.280mm(11)X280mm(11)

PANEL THICKNESS: 0.3mm(0.011) ~ 2.4mm(0.094)

ACCURACY: ±0.1mm

CYCLE TIME: Approx.15 sec./panel

MACHINE DIMENTIONS(mm) :  
 4,721L x 2,100W x 2,035H  
 (15.49x 6.89x 6.76)